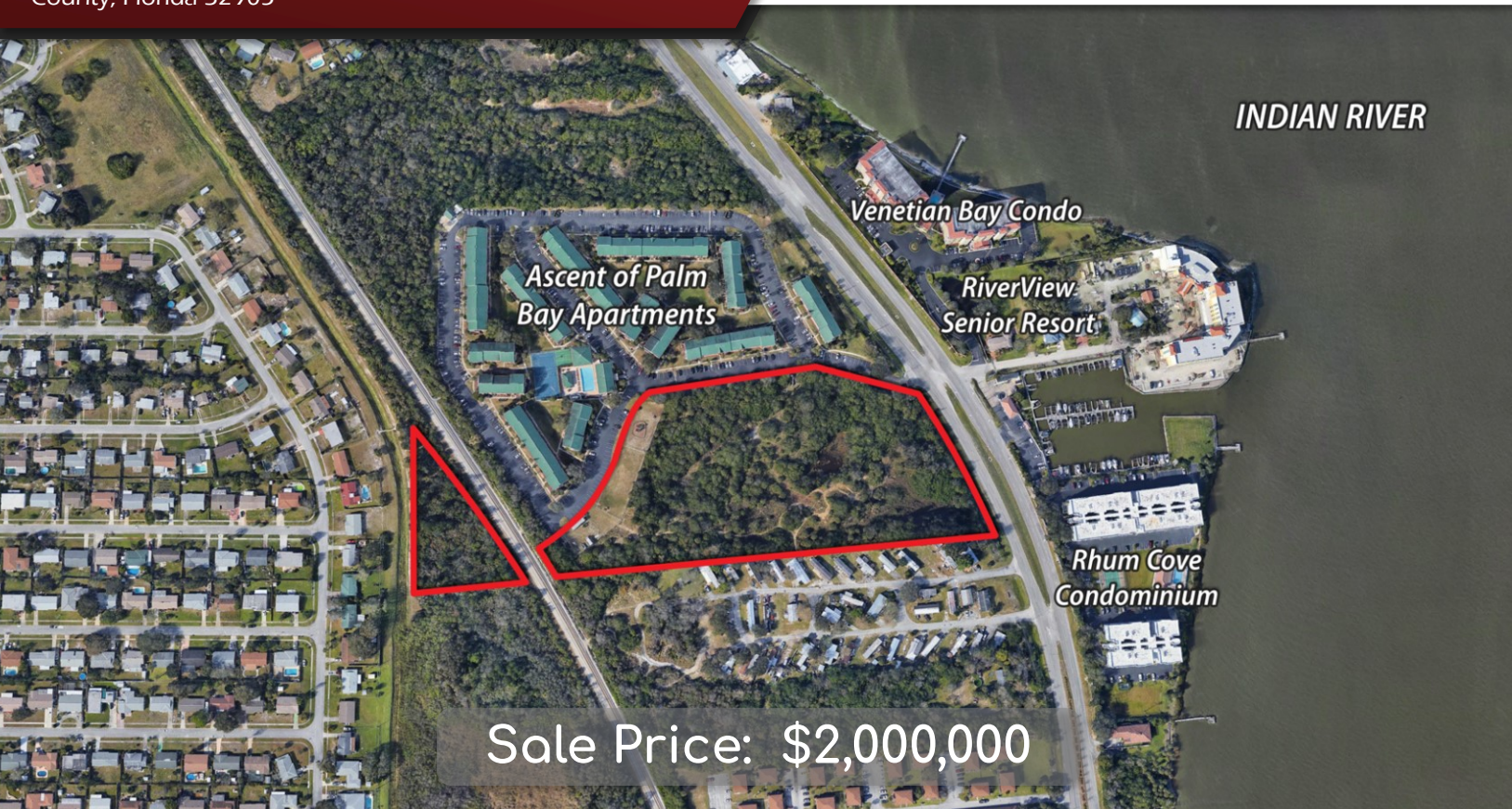


# Marina View

Dixie Highway NE & Wedgewood Road NE, Palm Bay, Brevard County, Florida 32905



**Sale Price: \$2,000,000**

## LOCATION DETAILS

Located on US Hwy 1 with a traffic count of 23,500 CPD south of Melbourne. This is a premium location due to its frontage facing the Indian River and its proximity to Cocoa Beach and Cape Canaveral. Less than 5 minutes from L3Harris Corp, Palm Bay's largest employer. Close access to I-95 and Space Coast Pkwy.



## PROPERTY DETAILS

- $\pm$  9.30 Acres
- $\pm$  315' Frontage on US Hwy 1
- Topography: Generally Level, Above Street Grade
- Zoning: RM-20 Multiple Family Residential
- 180 Units Allowed

2020 DEMOGRAPHICS	1-MILE	3-MILE	5-MILE
Population	4,449	24,656	73,551
Average HH Income	\$61,482	\$68,675	\$66,138
Median HH Income	\$47,202	\$50,261	\$46,493

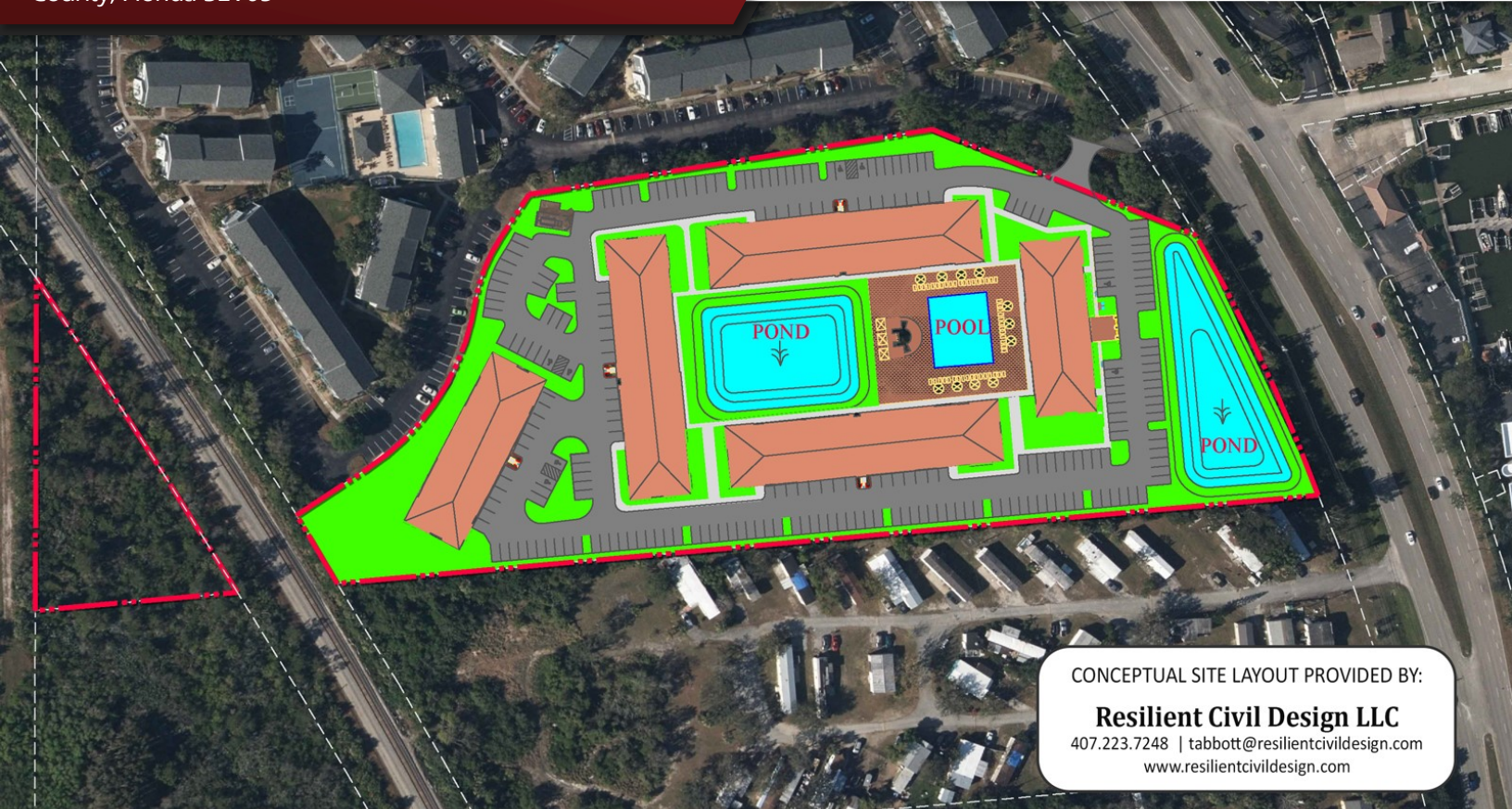
## CONTACT FOR MORE INFORMATION

**Marie Boyle, CCIM**  
407.383.8142  
[marie@palkiper.com](mailto:marie@palkiper.com)

# Marina View

Dixie Highway NE & Wedgewood Road NE, Palm Bay, Brevard  
County, Florida 32905

 **Palkiper**  
Commercial Real Estate Services



CONTACT FOR MORE INFORMATION

**Marie Boyle, CCIM**

407.383.8142

[marie@palkiper.com](mailto:marie@palkiper.com)

Palkiper has made every effort to obtain the information regarding this property from sources deemed reliable. However, we cannot warrant the complete accuracy thereof subject to errors, omissions, change of price, rental, or other conditions, prior sale, lease or financing or withdrawal without notice.  
Licensed Real Estate Broker.

03/25/21